

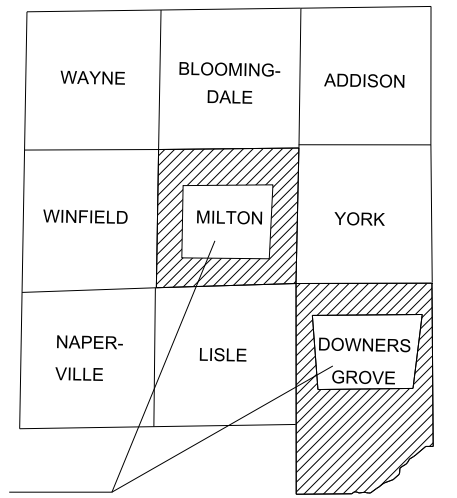
DUPAGE COUNTY DIVISION OF TRANSPORTATION

LIST OF SHEETS SEE BELOW
SUMMARY OF QUANTITIES SEE SHT. NO 2

RETAINING WALL LIST
1. WALL ID NO. R003587925R - 55TH STREET
2. WALL ID NO. R004353157L - COUNTY FARM ROAD

LOCATION
SECTION

PLANS FOR PROPOSED
2022 RETAINING WALL REPLACEMENT - VARIOUS LOCATIONS
22-RETWL-03-MS



PROJECT LOCATION

DUPAGE COUNTY

INDEX OF SHEETS

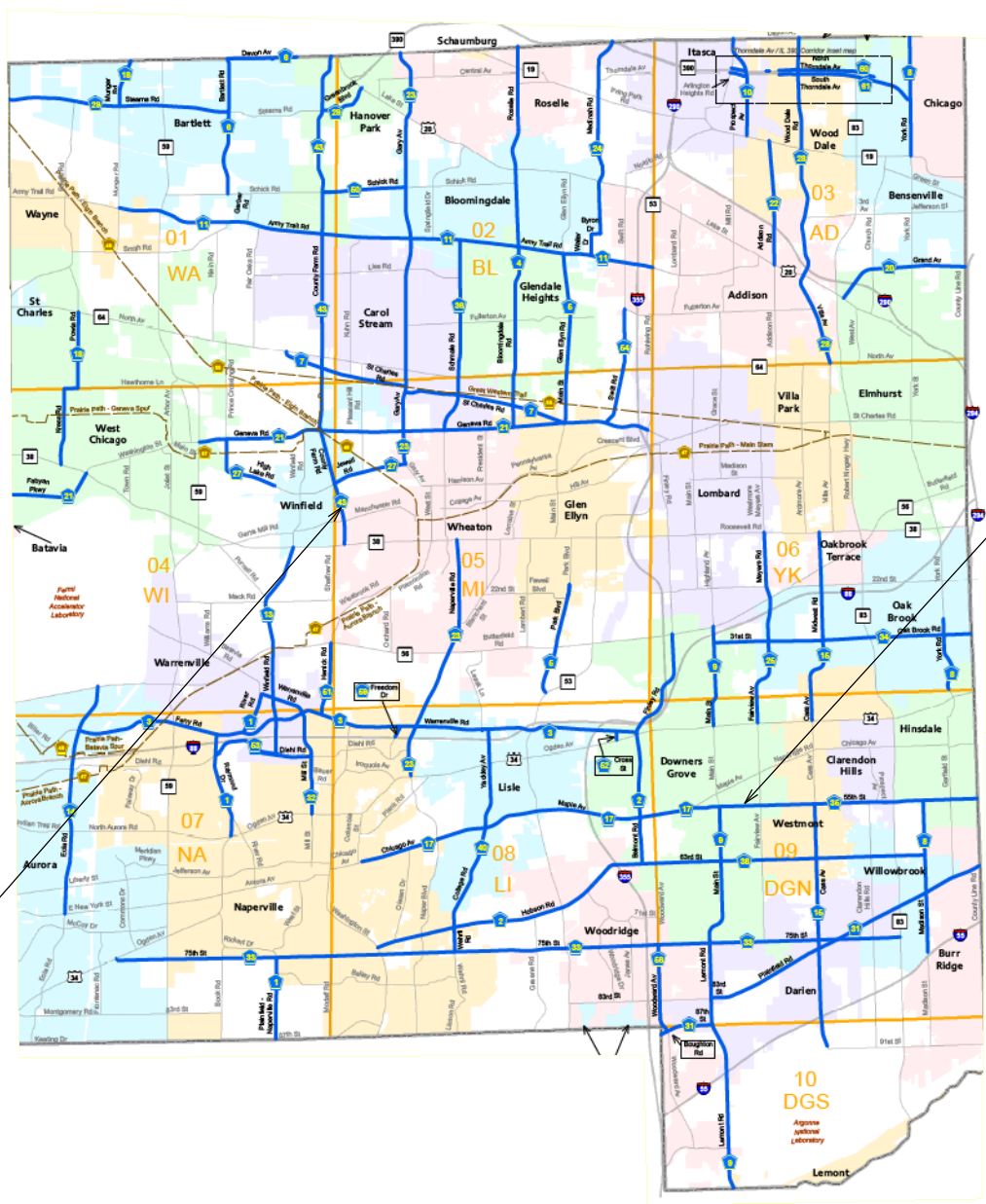
SHEET NO.	DESCRIPTION
1	COVER
2 - 3	SUMMARY OF QUANTITIES
4	GENERAL NOTES
5	RETAINING WALL REPAIR PLANS - WALL ID NO. R003587925R - 55TH STREET
6	RETAINING WALL REPAIR PLANS - WALL ID NO. R004353157L - COUNTY FARM ROAD

HIGHWAY STANDARDS

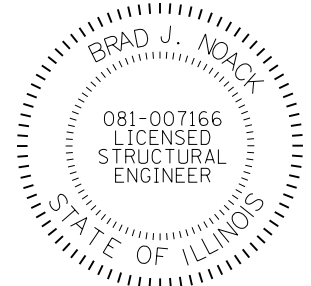
NUMBER	DESCRIPTION
000001	STANDARD SYMBOLS, ABBREVIATIONS, AND PATTERNS
001006	DECIMAL OF AN INCH AND OF A FOOT
701602	URBAN LANE CLOSURE, MULTILANE, 2W WITH BIDIRECTIONAL LEFT TURN LANE
701606	URBAN SINGLE LANE CLOSURE, MULTILANE, 2W WITH MOUNTABLE MEDIAN
701901	TRAFFIC CONTROL DEVICES

IDOT DISTRICT ONE STANDARDS

NUMBER	DESCRIPTION
TC-10	TRAFFIC CONTROL AND PROTECTION FOR SIDE ROADS, INTERSECTIONS, AND ROADWAYS



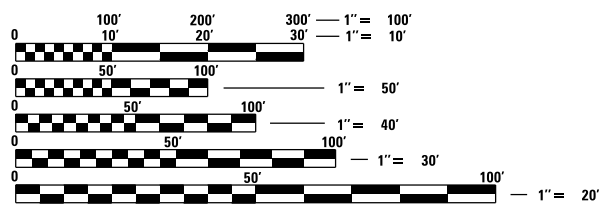
1. WALL ID NO.
R003587925R - 55TH STREET



Brad J. Noack

BRAD J. NOACK P.E., S.E.
NO. 081-007166
EXP. DATE 11/30/2022

CALL J.U.L.I.E.
JOINT UTILITY LOCATING
INFORMATION FOR EXCAVATORS
800-892-0123



FULL SIZE PLANS HAVE BEEN
PREPARED USING STANDARD
ENGINEERING SCALES

PROJECT LOCATION MAP
NOT TO SCALE

PLANS PREPARED BY

LOCHNER
H. W. LOCHNER, INC.
225 WEST WASHINGTON STREET
12 TH FLOOR
CHICAGO, ILLINOIS 60606

FOR DUPAGE COUNTY DIVISION OF TRANSPORTATION
CHRISTOPHER C. SNYDER, P.E., COUNTY ENGINEER

PAY ITEM NO.	IDOT CODE NO.	ITEM	UNIT	TOTAL QUANTITY	WALL I.D. R004353157L	WALL I.D. R003587925R	
1	20101100	TREE TRUNK PROTECTION	EACH	1	1		
2	20101200	TREE ROOT PRUNING	EACH	1	1		
3	20101700	SUPPLEMENTAL WATERING	UNIT	1.4	1.2	0.2	
4	21101625	TOPSOIL FURNISH AND PLACE, 6"	SQ YD	89	53	36	
5	25100630	EROSION CONTROL BLANKET	SQ YD	6	6		
6	25200110	SODDING, SALT TOLERANT	SQ YD	62	53	9	
7	28000510	INLET FILTERS	EACH	1	1		
8	42001300	PROTECTIVE COAT	SQ YD	106	54	52	
9	42400200	PORTLAND CEMENT CONCRETE SIDEWALK 5 INCH	SQ FT	665	300	365	
10	44000600	SIDEWALK REMOVAL	SQ FT	665	300	365	
11	50200100	STRUCTURE EXCAVATION	CU YD	121	70	51	
12	52200800	SEGMENTAL CONCRETE BLOCK WALL	SQ FT	506	300	206	
13	67100100	MOBILIZATION	L SUM	1			
*	14	70106800	CHANGEABLE MESSAGE SIGN	CAL MO	2	1	1
15	X0322924	RETAINING WALL REMOVAL	SQ FT	254	173	81	
16	Z0013798	CONSTRUCTION LAYOUT	L SUM	1			

* DENOTES SPECIALTY ITEM

MODEL D:\d\h\h\LOCHNER\2022\20220322\20220322_1103_CADD\01_Sheets\CHIT\W06\General\W06-SHT-HWL-SDO_01.dgn

LOCHNER
 H. W. LOCHNER, INC.
 225 WEST WASHINGTON STREET
 12 TH FLOOR
 CHICAGO, ILLINOIS 60606

USER NAME = JSCHRAMM	DESIGNED - JS	REVISED -
PLOT SCALE = 2.0000' / in.	DRAWN - JS	REVISED -
PLOT DATE = 3/22/2022	CHECKED - DB	REVISED -
	DATE - 03/22/2022	REVISED -

**DUPAGE COUNTY
 DIVISION OF TRANSPORTATION**

**2022 RETAINING WALL REPAIRS - VARIOUS LOCATIONS
 SUMMARY OF QUANTITIES**

SCALE: NTS SHEET 1 OF 2 SHEETS STA. N/A TO STA. N/A

C.H.	SECTION	COUNTY	TOTAL SHEETS	SHEET NO.
VAR	22-RETWL-03-MS	DUPAGE	6	2
			ILLINOIS	FED. AID PROJECT

GENERAL NOTES

THE TERM "STANDARD SPECIFICATIONS" CITED IN THESE PLANS REFERS TO THE LATEST EDITION OF THE ILLINOIS DEPARTMENT OF TRANSPORTATION STANDARD SPECIFICATIONS FOR ROAD AND BRIDGE CONSTRUCTION.

NO WORK SHALL COMMENCE UNTIL TRAFFIC CONTROL REQUIREMENTS ARE MET.

MAIL BOXES SHALL BE RELOCATED BY THE CONTRACTOR AS DIRECTED BY THE LOCAL POSTAL AUTHORITY. UNLESS INCLUDED AS A CONTRACT PAY ITEM, THIS WORK SHALL BE CONSIDERED TO BE INCLUDED IN THE CONTRACT UNIT PRICE FOR EARTH EXCAVATION.

ALL UTILITIES, SCHOOL DISTRICTS, LOCAL POLICE, AND FIRE DEPARTMENTS SHALL BE NOTIFIED BY THE CONTRACTOR PRIOR TO THE START OF CONSTRUCTION.

UNLESS AUTHORIZED BY THE ENGINEER, ALL EXISTING ACCESS POINTS SHALL BE MAINTAINED AT ALL TIMES BY THE CONTRACTOR.

ALL EXCESS MATERIAL (BROKEN CONCRETE, CULVERT PIPE, WASTE ROADWAY EXCAVATION, SURPLUS MATERIAL FROM SEWER TRENCHES, ETC.) SHALL BE LEGALLY DISPOSED OF OUTSIDE THE LIMITS OF THE RIGHT-OF-WAY. IT SHALL BE THE CONTRACTOR'S RESPONSIBILITY TO SELECT DUMP SITES AND OBTAIN PERMISSION AND ALL NECESSARY PERMITS TO USE SUCH DUMP SITES. THIS WORK WILL NOT BE PAID FOR SEPARATELY, BUT SHALL BE INCLUDED IN THE TOTAL PROJECT COSTS BID BY THE CONTRACTOR.

CONTRACTOR SHALL NOT SCALE DIMENSIONS FROM THE CONTRACT PLANS FOR CONSTRUCTION PURPOSES. SCALES SHOWN ARE FOR INFORMATION ONLY.

TREE REMOVAL, CLEARING AND HEDGE REMOVAL

TREES NOT MARKED FOR REMOVAL SHALL BE CONSIDERED AS DESIGNATED TO BE SAVED AND SHALL BE PROTECTED UNDER THE PROVISIONS OF ARTICLE 201.05 OF THE STANDARD SPECIFICATIONS.

ALL LIMBS, BRANCHES, AND OTHER DEBRIS RESULTING FROM THIS WORK SHALL BE DISPOSED OF BY THE CONTRACTOR AT OWN EXPENSE OUTSIDE THE LIMITS OF THE RIGHT-OF-WAY.

ALL CLEARING, REMOVAL OF BUSHES, HEDGES, AND TREES UNDER SIX (6) INCHES IN DIAMETER SHALL BE INCLUDED IN THE CONTRACT UNIT PRICE FOR EARTH EXCAVATION OR STRUCTURE EXCAVATION AS IT APPLIES.

OVERHANGING LIMBS

OVERHANGING LIMBS ARE TO BE TRIMMED OR CUT OFF TO PROVIDE A MINIMUM VERTICAL CLEARANCE OF TWENTY (20) FEET FROM THE FINISHED SURFACE OF THE ROAD. CLEARANCE TO SIDEWALKS OR PATHS SHALL BE AS DIRECTED BY THE ENGINEER.

LIMB PRUNING SHALL BE UNDERTAKEN IN A TIMELY FASHION SO AS NOT TO INTERFERE WITH CONSTRUCTION.

ALL LIMBS, BRANCHES, AND OTHER DEBRIS RESULTING FROM THIS WORK SHALL BE DISPOSED OF BY THE CONTRACTOR AT HIS EXPENSE OUTSIDE THE LIMITS OF THE RIGHT-OF-WAY.

TOPSOIL

TOPSOIL SHALL BE PLACED TO A DEPTH OF SIX (6) INCHES AND BE MEASURED IN SQUARE YARDS.

THE CROSS-SECTIONS INDICATE THE FINISHED GRADE OF TOPSOIL.

TOPSOIL SHALL NOT BE STOCKPILED WITHIN THE LIMITS OF CONSTRUCTION; THE LOCATIONS OF TOPSOIL STOCKPILES WITHIN THE RIGHT-OF-WAY MUST BE APPROVED BY THE ENGINEER.

EROSION CONTROL:

ALL WORK SHALL BE DONE IN ACCORDANCE WITH ARTICLE VII OF THE DUPAGE COUNTY COUNTYWIDE STORMWATER AND FLOOR PLAIN ORDINANCE, EFFECTIVE APRIL 2013 AND ALL SUBSEQUENT REVISIONS. ALL SEDIMENT AND EROSION CONTROL MEASURES WILL BE INSTALLED PER IDOT STANDARD 280001 OR AS SPECIFIED HEREIN AND PAID FOR IN ACCORDANCE WITH SECTION 280 OF THE STANDARD SPECIFICATIONS. ALL CONSTRUCTION ACTIVITIES WILL BE IN ACCORDANCE WITH THE NATIONAL POLLUTANT DISCHARGE ELIMINATION SYSTEM STORM WATER PERMITS ILR10 AND ILR40.

EROSION CONTROL SHALL BE PROVIDED IN ACCORDANCE WITH THE SEQUENCE OF STAGE CONSTRUCTION. THE CONTRACTOR SHALL SUBMIT A DETAILED SCHEDULE FOR APPROVAL.

SEDIMENT AND EROSION CONTROL DEVICES SHALL BE FUNCTIONAL BEFORE THE PROJECT SITE IS OTHERWISE DISTURBED.

ALL DISTURBED AREAS SHALL BE SEEDED OR SODDED AS SOON AS PRACTICAL AFTER CONSTRUCTION ACTIVITIES IN THAT AREA HAVE CONCLUDED. IF A TOPSOIL STOCKPILE IS TO REMAIN IN PLACE FOR MORE THAN THREE DAYS, EROSION CONTROL MEASURES WILL BE PROVIDED.

STOCKPILES AND MATERIAL STORAGE ARE PROHIBITED IN SPECIAL MANAGEMENT AREAS INCLUDING WETLANDS, FLOOR PLAINS, AND BUFFERS. LOCATIONS OF STOCKPILES MUST BE APPROVED BY THE ENGINEER AND HAVE PROPER EROSION CONTROL MEASURES.

RECEPTACLES FOR CONSTRUCTION DEBRIS, INCLUDING CONCRETE TRUSH WASHOUT WASTE, SHALL BE PROVIDED AND MAINTAINED BY THE CONTRACTOR. THESE WILL NOT BE ALLOWED IN SPECIAL MANAGEMENT AREAS. RECEPTACLES AND THEIR LOCATIONS MUST BE APPROVED BY THE ENGINEER AND HAVE PROPER EROSION CONTROL MEASURES. THIS WORK WILL NOT BE PAID FOR SEPARATELY, BUT SHALL BE INCLUDED IN THE APPLICABLE ITEMS OF WORK.

HAY OR STRAW BALES WILL NOT BE ALLOWED AS PERIMETER EROSION BARRIER OR AS A DITCH CHECK.

WATER PUMPED OR OTHERWISE DISCHARGED FROM THE SITE DURING CONSTRUCTION DEWATERING SHALL BE FILTERED.

WHEN TEMPORARY DRAINAGE IS ESTABLISHED, EROSION CONTROL MEASURES MAY BE REQUIRED BY THE ENGINEER.

GRAVEL ROADS, ACCESS DRIVES, PARKING AREAS OF SUFFICIENT WIDTH AND LENGTH, AND VEHICLE WASH DOWN FACILITIES IF NECESSARY, SHALL BE PROVIDED TO PREVENT SOIL FROM BEING TRACKED ONTO PUBLIC OR PRIVATE ROADWAYS. ANY SOIL REACHING A PUBLIC OR PRIVATE ROADWAY SHALL BE REMOVED BEFORE THE END OF EACH WORKDAY AND AS NEEDED.

CLEANING OF VEHICLES AND EQUIPMENT, INCLUDING CONCRETE MIXERS, SHALL BE PERFORMED IN A MANNER TO REDUCE THE AMOUNT OF POLLUTANTS TRIBUTARY TO STORM SEWERS AND OPEN WATERS TO THE MAXIMUM EXTENT PRACTICAL.

ALL NECESSARY MEASURES SHALL BE TAKEN TO CONTAIN ANY FUEL OR POLLUTION RUNOFF. LEAKING EQUIPMENT OR SUPPLIES SHALL BE IMMEDIATELY REPAIRED OR REMOVED FROM THE SITE.

SEDIMENT COLLECTED DURING CONSTRUCTION BY THE VARIOUS TEMPORARY EROSION CONTROL SYSTEMS SHALL BE DISPOSED OF ON A REGULAR BASIS. SEDIMENT SHALL BE REMOVED FROM EROSION CONTROL SYSTEMS WHEN THE HEIGHT OF THE SEDIMENT EXCEEDS ONE-HALF OF THE HEIGHT OF THE FILTER DEVICE.

ALL EROSION CONTROL MEASURES SHALL BE KEPT OPERATIONAL AND MAINTAINED CONTINUOUSLY THROUGHOUT THE PERIOD OF LAND DISTURBANCE UNTIL PERMANENT SEDIMENT AND EROSION CONTROL MEASURES ARE OPERATIONAL.

ALL TEMPORARY EROSION AND SEDIMENT CONTROL MEASURES SHALL BE REMOVED WITHIN 30 DAYS AFTER FINAL STABILIZATION IS ACHIEVED.

THE ENGINEER SHALL INSPECT EROSION CONTROL MEASURES PERIODICALLY AND WITHIN 24 HOURS OF ANY STORM EXCEEDING 1#2 INCH PRECIPITATION. DAMAGED AND INEFFECTIVE EROSION CONTROL MEASURES SHALL BE REPAIRED OR REPLACED BY THE CONTRACTOR WITHIN 24 HOURS.

THE QUANTITIES FOR EROSION CONTROL MEASURES ARE APPROXIMATE, AND ARE TO BE FIELD LOCATED BY THE CONTRACTOR, AND APPROVED BY THE ENGINEER PRIOR TO BEGINNING CONSTRUCTION. EROSION CONTROL MEASURES TO BE MAINTAINED AND ADJUSTED AS NECESSARY BASED ON CONSTRUCTION STAGING AND SEQUENCING.

TRENCH BACKFILL

WHERE TRENCH BACKFILL IS REQUIRED, THE MATERIAL USED SHALL BE COMPACTED AS SPECIFIED IN ARTICLE 550.07 OF THE STANDARD SPECIFICATIONS USING METHOD ONE.

MAINTENANCE OF TRAFFIC NOTES

TRAFFIC CONTROL AND PROTECTION SHALL BE PERFORMED IN ACCORDANCE WITH THESE NOTES, APPLICABLE SPECIAL PROVISIONS, AND SECTION 701 OF THE STANDARD SPECIFICATIONS AS AMENDED BY THE SPECIAL PROVISION FOR WORK ZONE TRAFFIC CONTROL (CHECK SHEET LRS 3).

THE TYPE III BARRICADES ARE TO BE PLACED IN ACCORDANCE WITH STANDARD 701901 UNLESS AUTHORIZED BY THE ENGINEER TO USE AN ALTERNATE ARRANGEMENT.

EXISTING TRAFFIC CONTROL SIGNS AND DEVICES MAY BE REMOVED BY THE DUPAGE COUNTY DIVISION OF TRANSPORTATION AFTER THE TRAFFIC CONTROL REQUIREMENTS ARE MET OR AS AUTHORIZED BY THE ENGINEER; ANY SIGNS OR DEVICES LEFT IN PLACE AT THIS TIME ARE TO BE RELOCATED, MAINTAINED AND PROTECTED FROM DAMAGE BY THE CONTRACTOR AND ANY DAMAGED OR LOST SIGNS WILL BE REPLACED BY THE CONTRACTOR.

TYPE I OR TYPE II BARRICADES, DRUMS, OR VERTICAL PANELS WITH MONODIRECTIONAL STEADY-BURN LIGHTS SHALL BE REQUIRED ALONG TEMPORARY ROADS, DETOURS, AND SIDE STREETS TO DELINEATE THE TRAVELED WAY WITHIN THE CONSTRUCTION ZONE. THE MAXIMUM SPACING FOR THESE DEVICES SHALL BE 100 FEET CENTER TO CENTER.

ANY DROP OFF GREATER THAN THREE (3) INCHES WITHIN SIXTEEN (16) FEET OF A TRAVEL LANE SHALL BE PROTECTED BY TYPE I OR TYPE II BARRICADES, DRUMS OR VERTICAL PANELS WITH MONODIRECTIONAL STEADY-BURN LIGHTS AT 50 FOOT (MAXIMUM) CENTER TO CENTER SPACING. IF THE DROP OFF IS GREATER THAN TWENTY-FOUR (24) INCHES AND EXISTS FOR LONGER THAN 24 HOURS, IT SHALL BE PROTECTED BY TEMPORARY CONCRETE BARRIER. TEMPORARY CONCRETE BARRIER SHALL HAVE MONODIRECTIONAL STEADY-BURN LIGHTS AT 50 FOOT (MAXIMUM) CENTER TO CENTER SPACING. THE CONTRACTOR SHALL SCHEDULE HIS WORK AND OPERATIONS SUCH THAT A DROP OFF OF GREATER THAN 24 INCHES DOES NOT REMAIN WITHIN SIXTEEN FEET OF A TRAVEL LANE FOR MORE THAN 24 HOURS. THE CONTRACTOR MAY PLACE COMPACTED EXCAVATED MATERIAL, AGGREGATE, OR OTHER MATERIAL IN THE DROP OFF TO SATISFY THIS REQUIREMENT. THE PLANS INDICATE AREAS (IF ANY) IN WHICH THE DEPARTMENT EXPECTS THAT TEMPORARY CONCRETE BARRIER WILL BE REQUIRED FOR A DROP OFF OF GREATER THAN 24 INCHES TO REMAIN FOR MORE THAN 24 HOURS.

BARRICADES THAT MUST BE PLACED IN EXCAVATED AREAS SHALL HAVE LEG EXTENSIONS INSTALLED SUCH THAT THE TOP OF BARRICADE IS IN COMPLIANCE WITH THE HEIGHT REQUIREMENTS OF STANDARD 701901.

TYPE I, II, AND / OR III BARRICADES WITH TWO-WAY FLASHING LIGHTS WILL BE REQUIRED TO GUIDE TRAFFIC AWAY FROM PAVEMENT AREAS CLOSED FOR CONSTRUCTION.

WHERE REQUIRED, TRAFFIC SIGNS SHALL BE RELOCATED FOR EACH STAGE OF CONSTRUCTION.

ARROW BOARDS WILL BE REQUIRED WHEN IMPLEMENTING ALL LANE CLOSURES.

PRIOR TO THE START OF CONSTRUCTION, REQUIRED TRAFFIC CONTROL DEVICES SHALL BE IN PLACE.

ALL EXISTING SIGNING THAT IS NOT APPLICABLE WHILE THE CONSTRUCTION IS IN EFFECT MUST BE COMPLETELY CONVERED BY THE CONTRACTOR.

THE CONTRACTOR MUST MAINTAIN ACCESS TO ALL PRIVATE AND COMMERCIAL DRIVEWAYS DURING CONSTRUCTION.

ALL HAZARDS, DITCHES, TRENCHES, EXCAVATIONS, ETC. NEAR OR ADJACENT TO WALKWAYS MUST BE CLEARLY DELINEATED AND ADEQUATELY PROTECTED.

PROPOSED MAINTENANCE OF TRAFFIC SIGNING MUST BE COVERED OR REMOVED WHEN NOT REQUIRED DURING A SPECIFIC STAGE OF CONSTRUCTION.

THE CONTRACTOR MUST CONDUCT HIS WORK IN SUCH A MANNER THAT EMERGENCY VEHICLES WILL HAVE ACCESS TO THE AREA AT ALL TIMES.

CONTRACTOR TO COORDINATE ALL HAUL AND ACCESS ROUTES WITH DUPAGE COUNTY AND ANY OTHER NECESSARY PARTY PRIOR TO BEGINNING CONSTRUCTION.

CONTRACTOR IS RESPONSIBLE FOR ADEQUATE SITE PROTECTION AND PROTECTION OF ALL EQUIPMENT AND MATERIALS DURING NON-WORKING HOURS.

ALL WORK SHALL TAKE PLACE FROM 9 A.M. TO 4 P.M. MONDAY TO FRIDAY UNLESS OTHERWISE APPROVED BY THE DEPARTMENT.

UNLESS OTHERWISE STATED ON THE PLANS OR DEPARTMENT APPROVAL, ALL TRAFFIC CLOSURES ARE TO BE DAILY CLOSURES ONLY. CONTRACTOR RESPONSIBLE FOR COORDINATING ALL SITES WITH DEPARTMENT PRIOR TO BEGINNING CONSTRUCTION.

IDOT STANDARDS

701602	URBAN MULTILANE, 2W WITH BIDIRECTIONAL LEFT TURN LANE
701606	URBAN SINGLE LANE CLOSURE, MULTILANE, 2W WITH MOUNTABLE MEDIAN
701901	TRAFFIC CONTROL DEVICES
TC-10	TRAFFIC CONTROL AND PROTECTION FOR SIDE ROADS, INTERSECTIONS, AND DRIVEWAYS

MODEL: SMODELNAMES
FILE NAME: SFILES

LOCHNER

H. W. LOCHNER, INC.
225 WEST WASHINGTON STREET
12 TH FLOOR
CHICAGO, ILLINOIS 60606

USER NAME =	DESIGNED - EHK	REVISED -
	DRAWN - EHK	REVISED -
PLOT SCALE =	CHECKED - BIN	REVISED -
PLOT DATE =	DATE - \$DATE	REVISED -

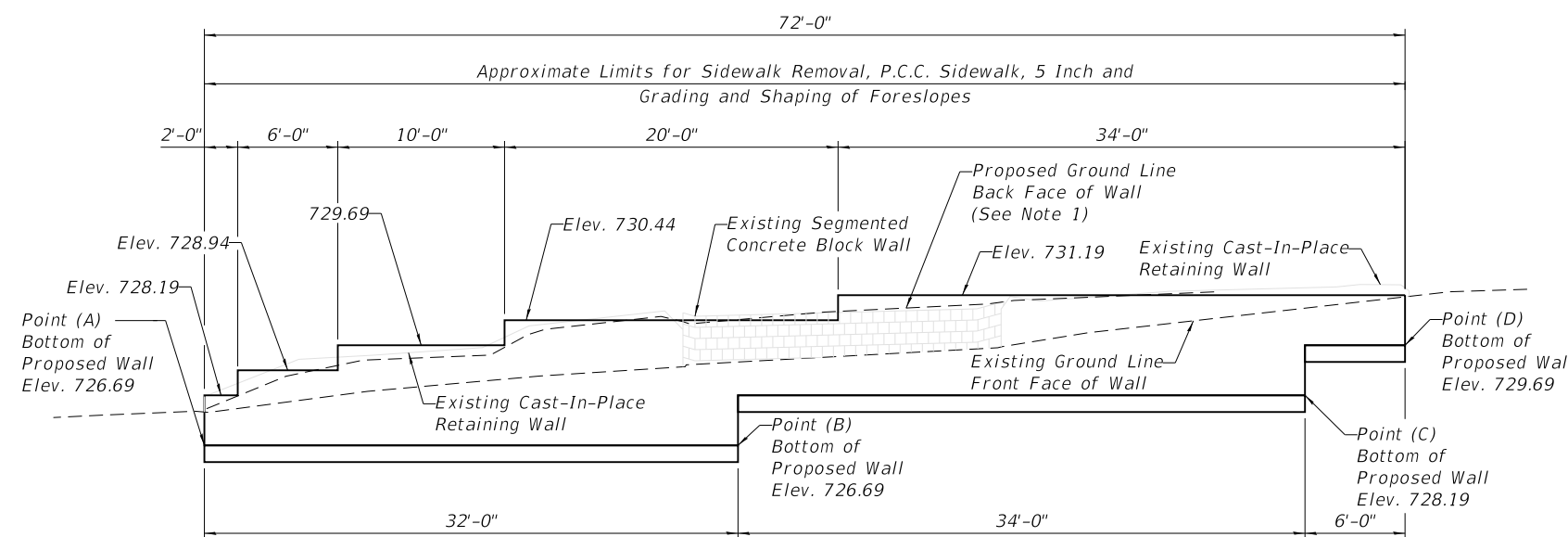
**DUPAGE COUNTY
DIVISION OF TRANSPORTATION**

**GENERAL NOTES
STRUCTURE NO. R004353157L**

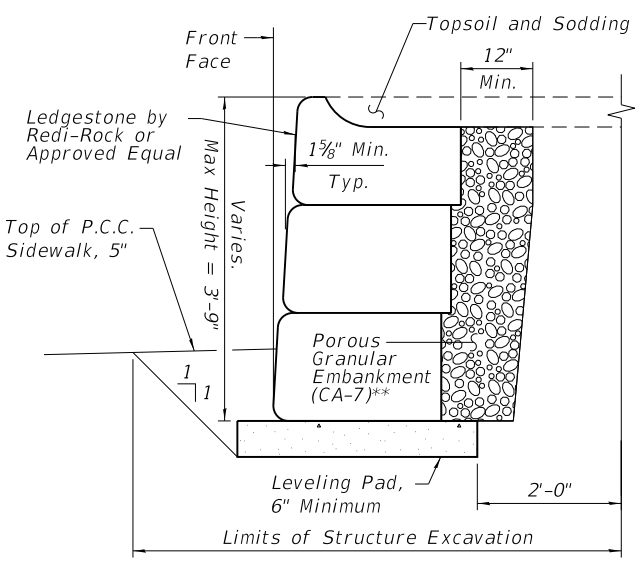
SHEET OF SHEETS

C.H.	SECTION	COUNTY	TOTAL SHEETS	SHEET NO.
	\$SECTION	\$COUNTY	\$TOTL	\$DWN0
		ILLINOIS	FED. AID PROJECT	

\$DATES \$TIMES



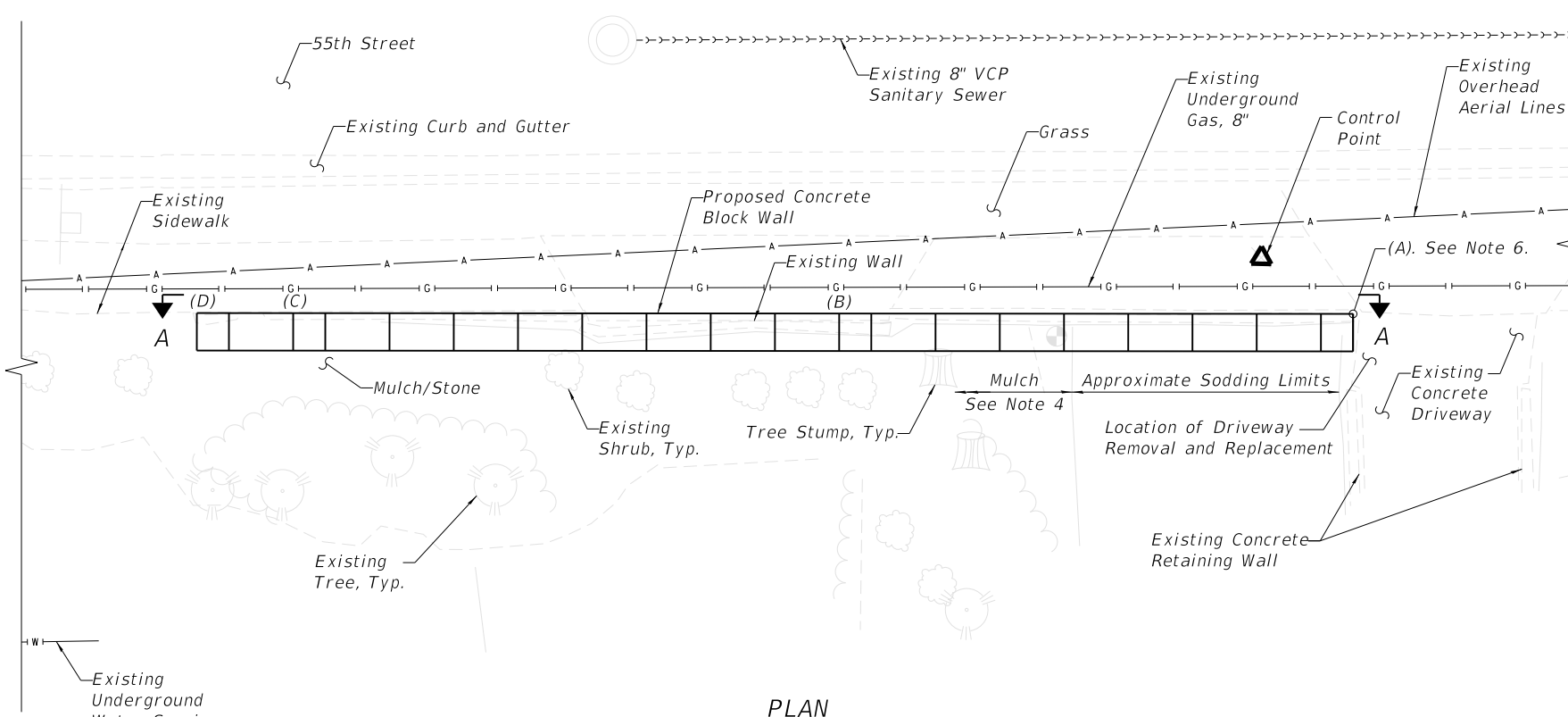
ELEVATION A-A
Not To Scale



TYPICAL SECTION THROUGH WALL
Note: Wall height and number of blocks varies
**Included with the cost of Segmental Concrete Block Wall



TYPICAL REDI-ROCK LEDGESTONE
Note: Contractor shall provide Redi-Rock Ledge Stone with similar color to above or approved equal.

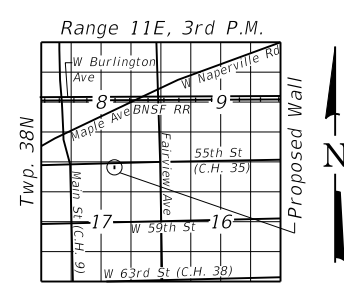


PLAN
3/16" = 1'-0"



LEGEND

- A — Existing Overhead Aerial
- G — Existing Underground Gasline
- - - - - Existing Underground Sanitary Sewer
- W — Existing Underground Water Service



LOCATION SKETCH

BILL OF MATERIALS

ITEM	UNIT	QUANTITY
Topsoil Furnish and Place, 6"	SQ YD	36
Sodding, Salt Tolerant	SQ YD	9
Protective Coat	SQ YD	52
Portland Cement Concrete Sidewalk, 5 Inch	SQ FT	365
Sidewalk Removal	SQ FT	365
Structure Excavation	CU YD	51
Segmental Concrete Block Wall	SQ FT	206
Retaining Wall Removal	SQ FT	81
Driveway Removal and Replacement	SQ YD	2
Grading and Shaping Foreslopes	FT	76
Pipe Underdrains for Structures	FT	72

NOTES

- Proposed Ground Level to match Existing Ground Level at the Front Face and Back Face of Wall.
- The design details of the proposed Segmental Concrete Block Wall shall be prepared by the wall manufacturer, submitted by the Contractor, and approved by the Engineer prior to installation.
- Bottom of wall elevation may be adjusted to accommodate modular block sizing.
- Contractor shall take care to mulch excavated areas beyond sodding limits. Cost of mulch is incidental to the contract and shall be in accordance with Section 1081.06(b) in the Standard Specifications.
- Drawing intended to be printed in color.
- Match northeast corner of existing wall at driveway with northeast corner of proposed wall at driveway. Proposed wall layout shall be placed adjacent to sidewalk, typical throughout.

SEQUENCE OF CONSTRUCTION

- Remove portion of driveway at east end of wall.
- Remove existing retaining wall and fill as shown.
- Install Segmental Concrete Block Wall and Porous Granular Backfill.
- Re-install portion of driveway, and install sodding, mulching and topsoil.

GENERAL PLAN & ELEVATION
55TH STREET (C.H. 35) AT FAIRMOUNT AVENUE
DUPAGE COUNTY
STRUCTURE NO. R003587925R

MODEL: GPE
FILE NAME: I:\CHIPR\000017181103_CADD\01_Sheets\Structural\WO6R003587925R-WO6-SHT-HWL-001_GPE.dgn
3/22/2022 1:09:13 PM

LOCHNER
H. W. LOCHNER, INC.
225 WEST WASHINGTON STREET
12 TH FLOOR
CHICAGO, ILLINOIS 60606

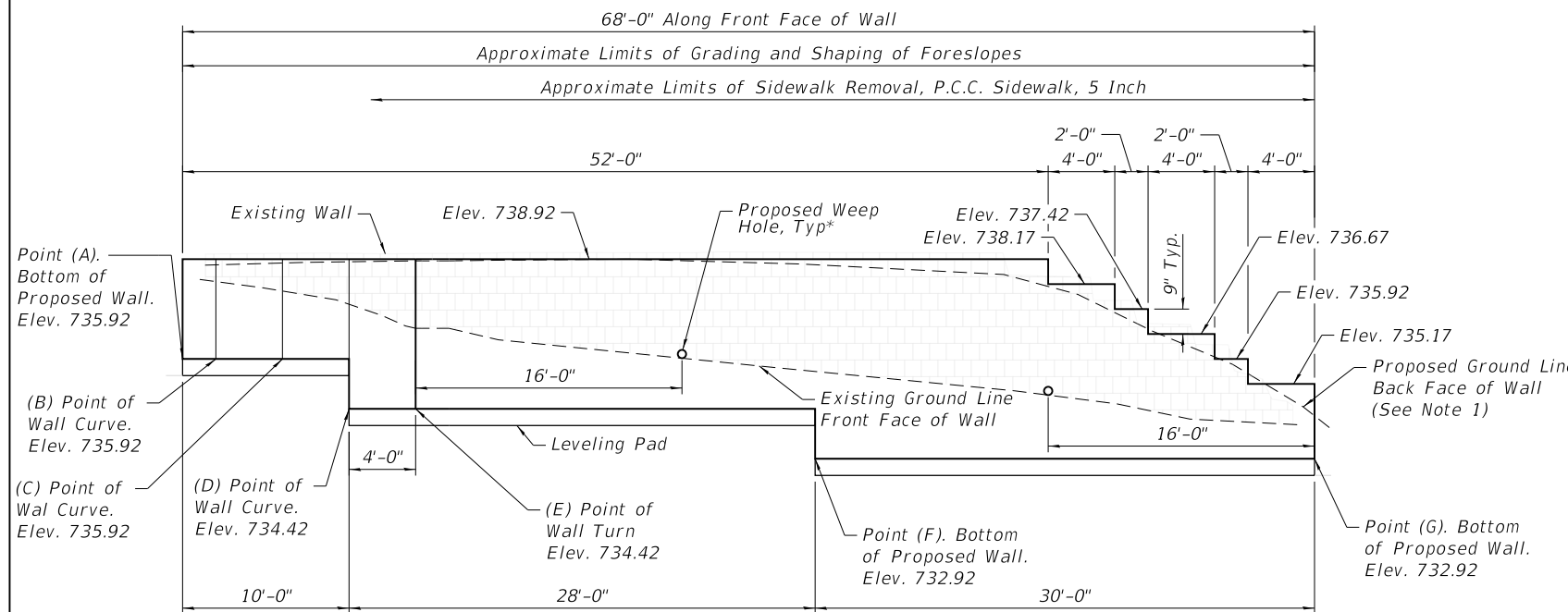
USER NAME =	DESIGNED - JWM	REVISED -
PLOT SCALE =	DRAWN - JWM	REVISED -
PLOT DATE =	CHECKED - BIN	REVISED -
	DATE - 03/22/2022	REVISED -

DUPAGE COUNTY
DIVISION OF TRANSPORTATION

GENERAL PLAN & ELEVATION
STRUCTURE NO. R003587925R

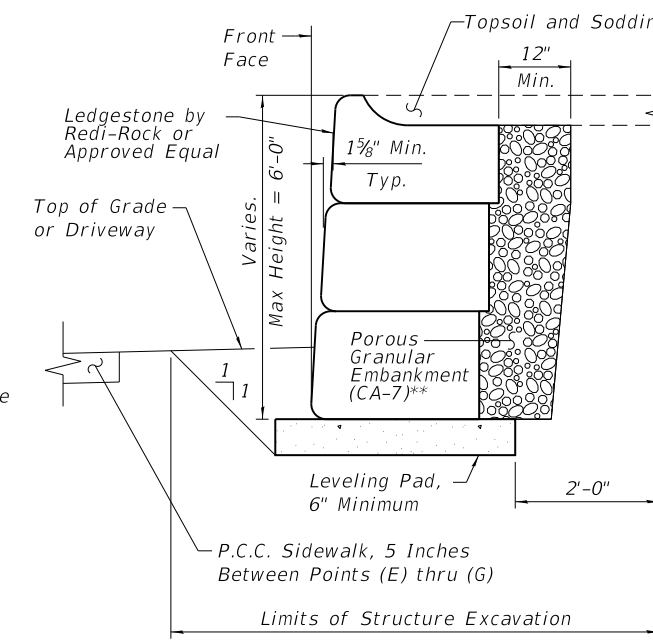
SHEET OF SHEETS

C.H.	SECTION	COUNTY	TOTAL SHEETS	SHEET NO.
	22-RETWL-03-MS	DUPAGE	6	5
		ILLINOIS	FED. AID PROJECT	



DEVELOPED ELEVATION A-A

Not To Scale
 *Included with the cost of Segmental Concrete Block Wall



TYPICAL SECTION THROUGH WALL

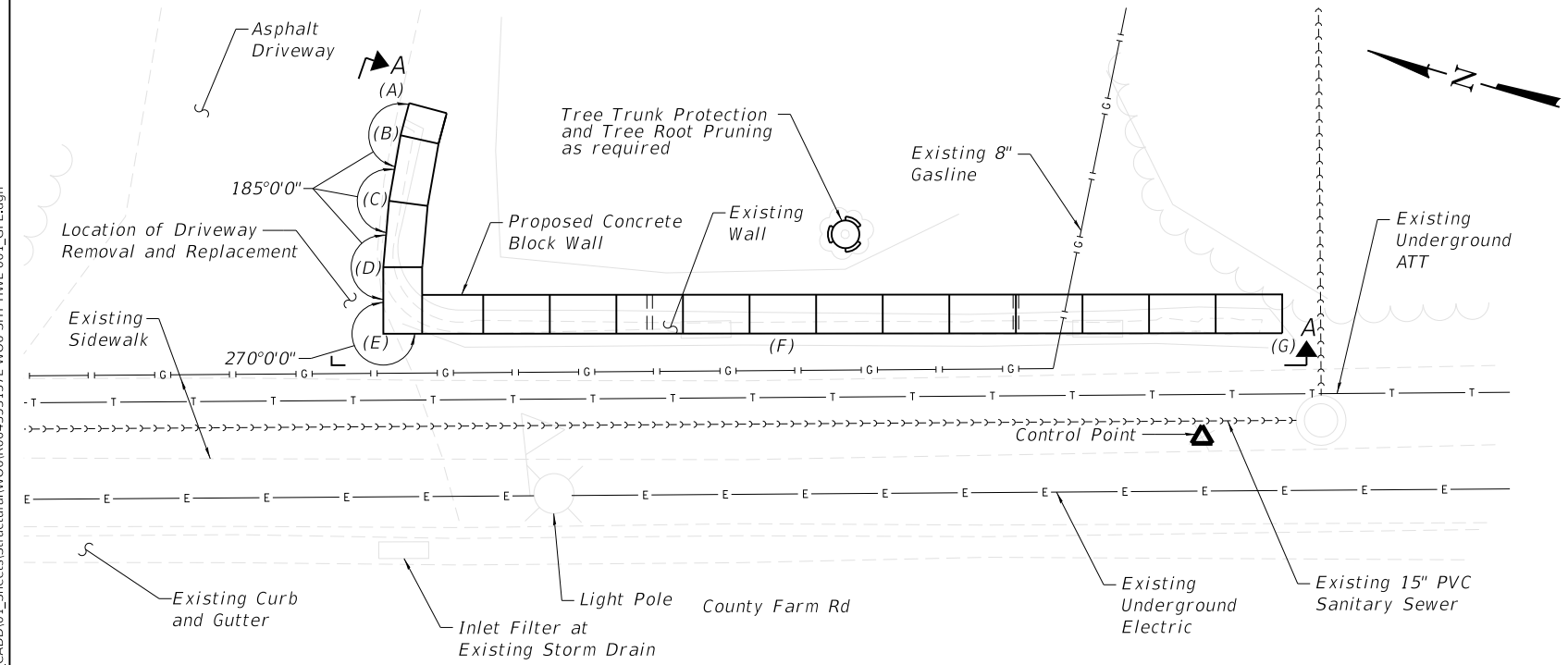
Note: Wall height and number of blocks varies
 **Included with the cost of Segmental Concrete Block Wall



TYPICAL REDI-ROCK LEDGESTONE
 Note: Contractor shall provide Redi-Rock Ledgesone with similar color to above or approved equal.

BILL OF MATERIALS

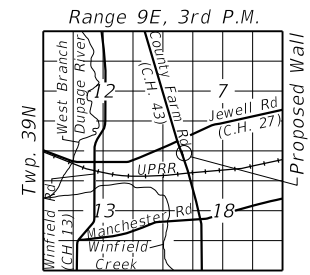
ITEM	UNIT	QUANTITY
Tree Trunk Protection	EACH	1
Tree Root Pruning	EACH	1
Topsoil Furnish and Place, 6"	SQ YD	53
Erosion Control Blanket	SQ YD	6
Sodding, Salt Tolerant	SQ YD	53
Protective Coat	SQ YD	54
Portland Cement Concrete Sidewalk, 5 Inch	SQ FT	300
Sidewalk Removal	SQ FT	300
Structure Excavation	CU YD	70
Segmental Concrete Block Wall	SQ FT	300
Retaining Wall Removal	SQ FT	173
Driveway Removal and Replacement	SQ YD	9
Grading and Shaping Foreslopes	FT	73
Pipe Underdrains for Structures	FT	63
Inlet Filters	EACH	1



PLAN
 3/16" = 1'-0"

LEGEND

- E — Existing Underground Electric
- G — Existing Underground Gasline
- - - - - Existing Underground Sanitary Sewer
- T — Existing Underground Telephone
- Tree Protection



LOCATION SKETCH

NOTES

- Proposed Ground Level to match Existing Ground Level at the Front Face and Back Face of Wall.
- The design details of the proposed Segmental Concrete Block Wall shall be prepared by the wall manufacturer, submitted by the Contractor, and approved by the Engineer prior to installation.
- Bottom of wall elevation may be adjusted to accommodate modular block sizing.
- Drawing intended to be printed in color.
- Locate Points (A) thru (D) and Points (F) and (G) along existing front face of wall at driveway and sidewalk.

SEQUENCE OF CONSTRUCTION

- Install Tree Protection as shown and remove portion of driveway at Front Face of wall.
- Remove existing retaining wall and fill as shown and perform Tree Root Pruning as necessary.
- Install Segmental Concrete Block Wall and Porous Granular Backfill.
- Re-install portion of asphalt driveway, and install sodding and topsoil.

GENERAL PLAN & ELEVATION
COUNTY FARM ROAD (C.H. 43) & HARRISON STREET
DUPAGE COUNTY
STRUCTURE NO. R004353157L

MODEL: GPE
 FILE NAME: I:\CHIPR\1000017181103_CADD\01_Sheets\Structural\WO6R004353157L-WO6-SHT-HWL-001_GPE.dgn
 3/22/2022 1:09:20 PM

LOCHNER
 H. W. LOCHNER, INC.
 225 WEST WASHINGTON STREET
 12 TH FLOOR
 CHICAGO, ILLINOIS 60606

USER NAME =	DESIGNED - JWM	REVISED -
PLOT SCALE =	DRAWN - JWM	REVISED -
PLOT DATE =	CHECKED - BJN	REVISED -
	DATE - 03/22/2022	REVISED -

DUPAGE COUNTY
DIVISION OF TRANSPORTATION

GENERAL PLAN & ELEVATION
STRUCTURE NO. R004353157L

SHEET OF SHEETS

C.H.	SECTION	COUNTY	TOTAL SHEETS	SHEET NO.
	22-RETWL-03-MS	DUPAGE	6	6
ILLINOIS FED. AID PROJECT				